



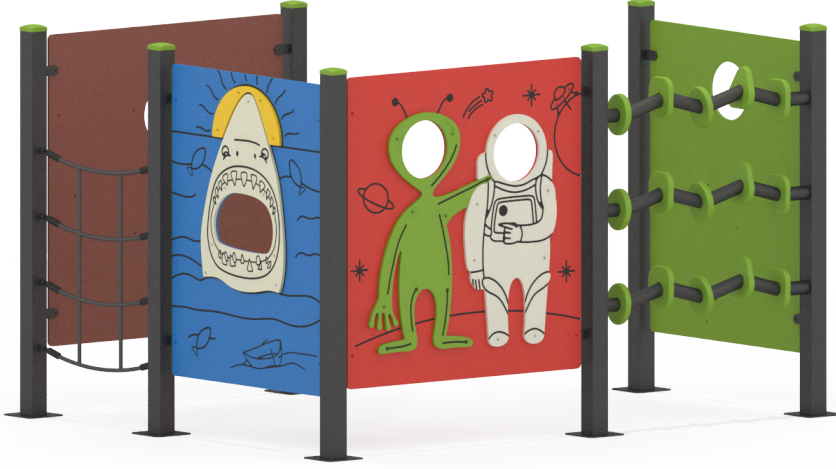
SURPRISE

HL205



PRODUCT INFORMATION

Product Line	●	Compact
User Ages	●	3-12
User Capacity	●	7
Fall Height	●	100cm
Dimension	●	241cm x 263cm
Safety Area	●	20m ²
Safety Dimension	●	441cm x 463cm
Maximum Height	●	155cm
Weight	●	198kg
Safety Certificate	●	EN 1176-1



PRODUCT DESCRIPTION

Play Panels are educational and teaching game panels designed for children to acquire and reinforce general motor skills such as perceptual and movement development, cognitive development, emotional development, and language development; providing attractive and stimulating activities for children in this regard.

They strengthen children's perception of colors and shapes. They encourage them to experiment and enhance their creativity. They trigger their desire to collaborate with other children. They bring children's imaginations together on different planes. All these elements ensure that children's early intellectual development is comprehensively stimulated. The entertaining teaching of play panels increases children's demands for learning.

ACTIVITIES



Climbing



Role Play



Thinking



Hand Skill

Address: Yukarı Eğercili Mahallesi, Atatürk Bulvarı, No:122 Çarşamba/SAMSUN Post Code: 55500

Tel: +90 362 266 66 96 polfisan@polfisan.com.tr www.polfisan.com.tr



Made in Türkiye



SURPRISE

HL205



PRODUCT SPECIFICATION



Number of
Users
•
7



Number of
Roofs
•
0



Number of
Slides
•
0



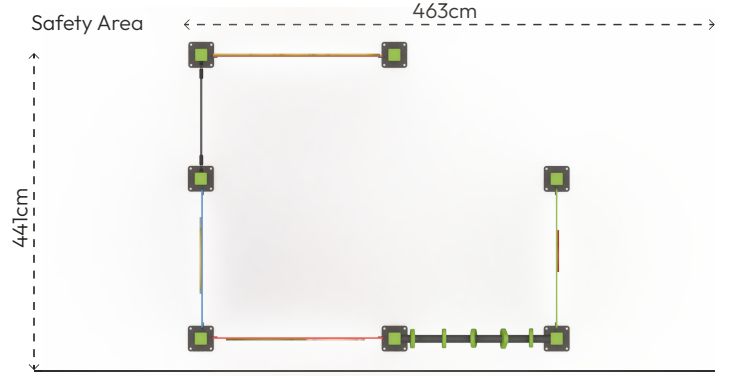
Number of
Entrances
•
0

COLOR PALETTE

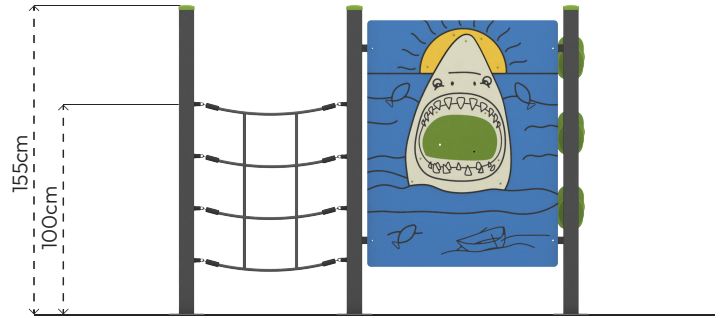


MATERIAL SPECIFICATION

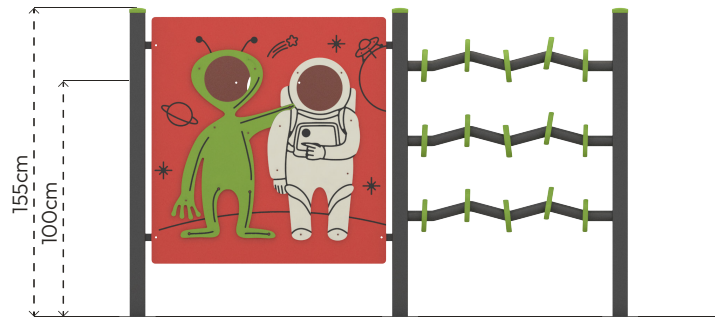
- 80x80mm steel profile is used as main construction.
- Panels are made of HPL sheets resistant to all weather conditions.
- Rope is made of polypropylene braided steel rope, diameter 16mm with 6 steel rope helixes.
- The metal surfaces of the product have been cleaned by sandblasting, washing, rinsing, and drying; zinc primer has been applied to increase corrosion resistance, and it has been painted with electrostatic powder coating.
- Pipe and profile openings are covered with plugs of appropriate shape and size.
- Screws are covered with plastic caps.
- Product doesn't have sharp edges and surfaces.
- Product has been produced in accordance with EN1176 standards.
- Please contact to Polifisan for updated information about product.



Top View



Side View



Front View

